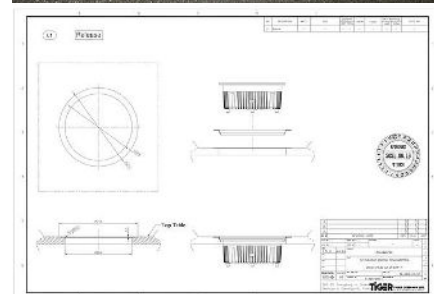


# Steel Ring for Flush Mounting Induction Warmers 1AIW110V2 and 1AIW230V2. 1AIW180V2RING

- Induction Warmer Ring
- Drops in pre-cut countertop or bar to hold induction warmer flush with surface
- Product Dimensions: 8.4375" x 8.4375" x .5" / 215 x 215 x 13 mm
- Product Weight: 1 lb / .5 kg
- Box Dimensions: 10" x 10" x 2" / 254 x 254 x 51 mm
- Box Weight: 2 lb / .9 kg



## Specifications

Carton Quantity	1
Length (inches)	8.4375
Width (inches)	8.4375
Height (inches)	0.5
Weight	1.0